

Nov. 1887  
**STONEHAM**  
MASS.

8

6

HANCOCK

WARREN

LYNDEN

GERRY

BENTON

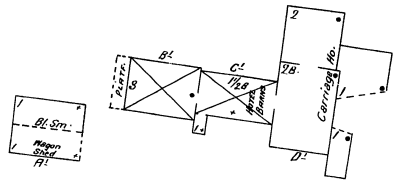
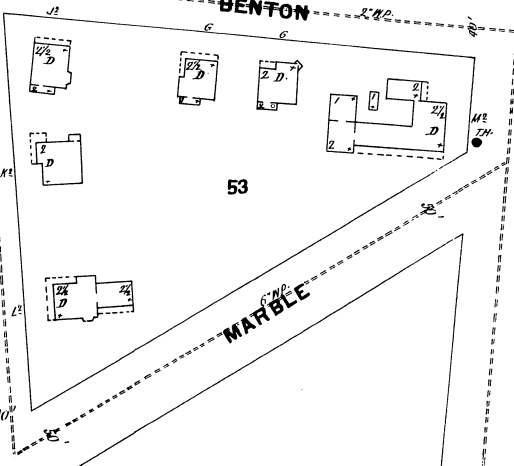
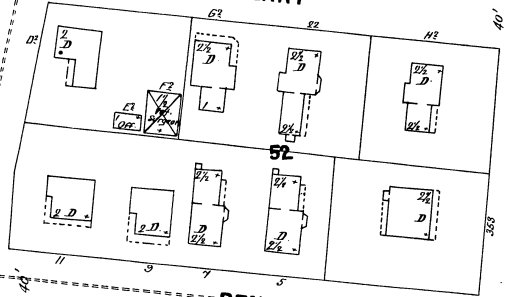
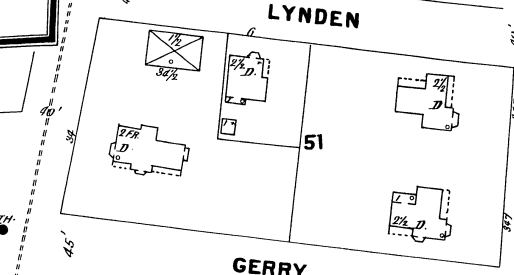
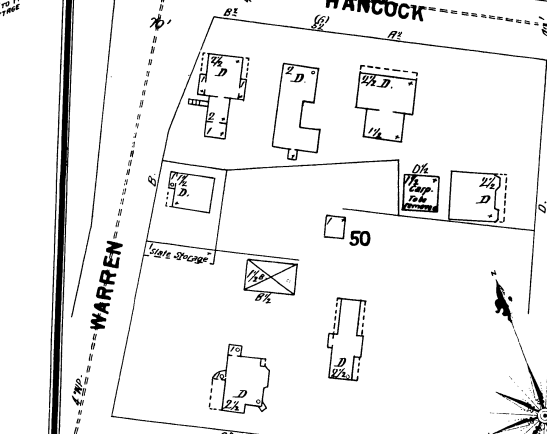
MARBLE

9

9

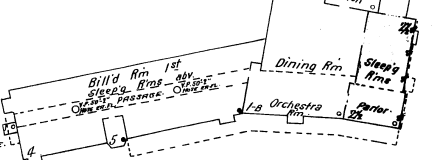
36

54



**LANGWOOD HOTEL**  
2 1/4 Miles S.W. of Central Sq.

Open from May 1st to Oct. 1st - 1887  
Popular story - 1887 - 1888 - 1889 - 1890  
2 1/2 miles S.W. of Central Sq. - Stoneham  
Main - 1/2 Mile S.W. of Hotel - 1/2 Mile  
From Middle St. to Hotel



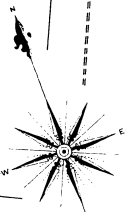
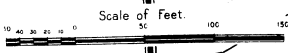
**PEOPLE'S GAS & ELECTRIC CO.**  
Main Bldgs in City - Power & Heat  
Steam - Pipes - Coal - 1st - 2nd - 3rd - 4th - 5th - 6th - 7th - 8th - 9th - 10th - 11th - 12th - 13th - 14th - 15th - 16th - 17th - 18th - 19th - 20th - 21st - 22nd - 23rd - 24th - 25th - 26th - 27th - 28th - 29th - 30th - 31st - 32nd - 33rd - 34th - 35th - 36th - 37th - 38th - 39th - 40th - 41st - 42nd - 43rd - 44th - 45th - 46th - 47th - 48th - 49th - 50th - 51st - 52nd - 53rd - 54th - 55th - 56th - 57th - 58th - 59th - 60th - 61st - 62nd - 63rd - 64th - 65th - 66th - 67th - 68th - 69th - 70th - 71st - 72nd - 73rd - 74th - 75th - 76th - 77th - 78th - 79th - 80th - 81st - 82nd - 83rd - 84th - 85th - 86th - 87th - 88th - 89th - 90th - 91st - 92nd - 93rd - 94th - 95th - 96th - 97th - 98th - 99th - 100th

**H. R. EMERSON & CO.**  
LUMBER

**CHARS. H. WALKER & CO.**  
COAL STEEL

Cemetery.

Hand full of Drain Pipe



MAIN

MIDDLE ST

POMEROTH ST

WRIGHT

SUMMER ST

Store No. 60 to 70 - Green

Green No. 1 2 3 4 5 6 7 8 9 10 11 12 13 14 15 16 17 18 19 20 21 22 23 24 25 26 27 28 29 30 31 32 33 34 35 36 37 38 39 40 41 42 43 44 45 46 47 48 49 50 51 52 53 54 55 56 57 58 59 60 61 62 63 64 65 66 67 68 69 70 71 72 73 74 75 76 77 78 79 80 81 82 83 84 85 86 87 88 89 90 91 92 93 94 95 96 97 98 99 100