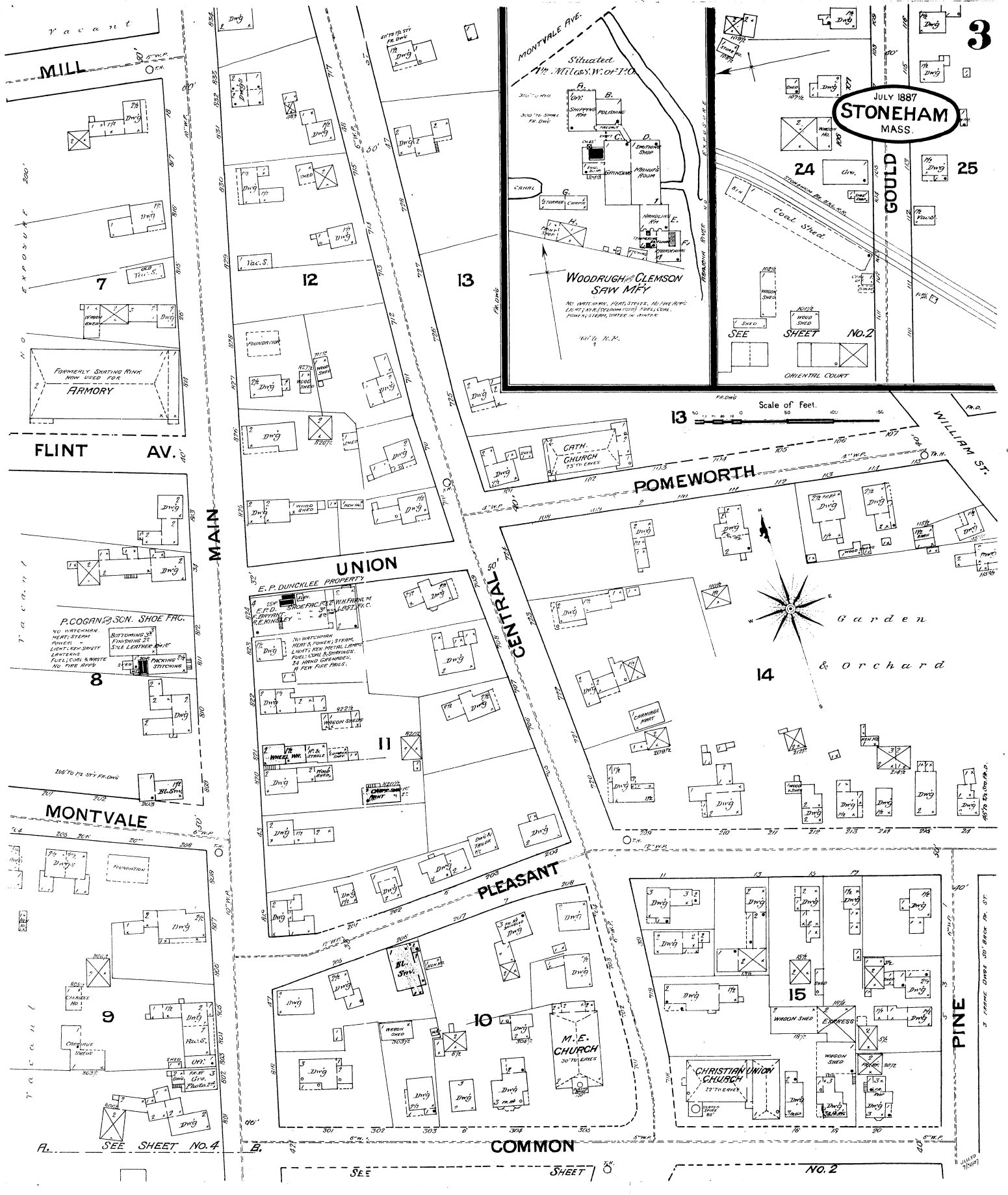


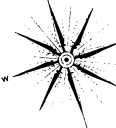
JULY 1887  
**STONEHAM**  
MASS.



Situated 1 1/2 Miles W. of T.O.

**WOODRUGH & CLEMSON SAW MILLS**  
NO WATER WHEEL, FOOT STEPS, NO LINE WHEELS  
ELECT. BY STEAM (WOOD) POWER, COAL  
POWER, STEAM, WATER IN TANKS

Scale of Feet.



Garden & Orchard

MILL

7

12

13

24

25

FLINT AV.

AV.

UNION

POMEWORTH

WILLIAM ST.

CENTRAL

14

MONTVALE

PLEASANT

M.E. CHURCH

CHRISTIAN UNION CHURCH

COMMON

PINE

SEE SHEET NO. 4

SEE

SHEET

NO. 2