

FEB 1916
STONEHAM
MASS.

9

FRANKLIN

SPENCER

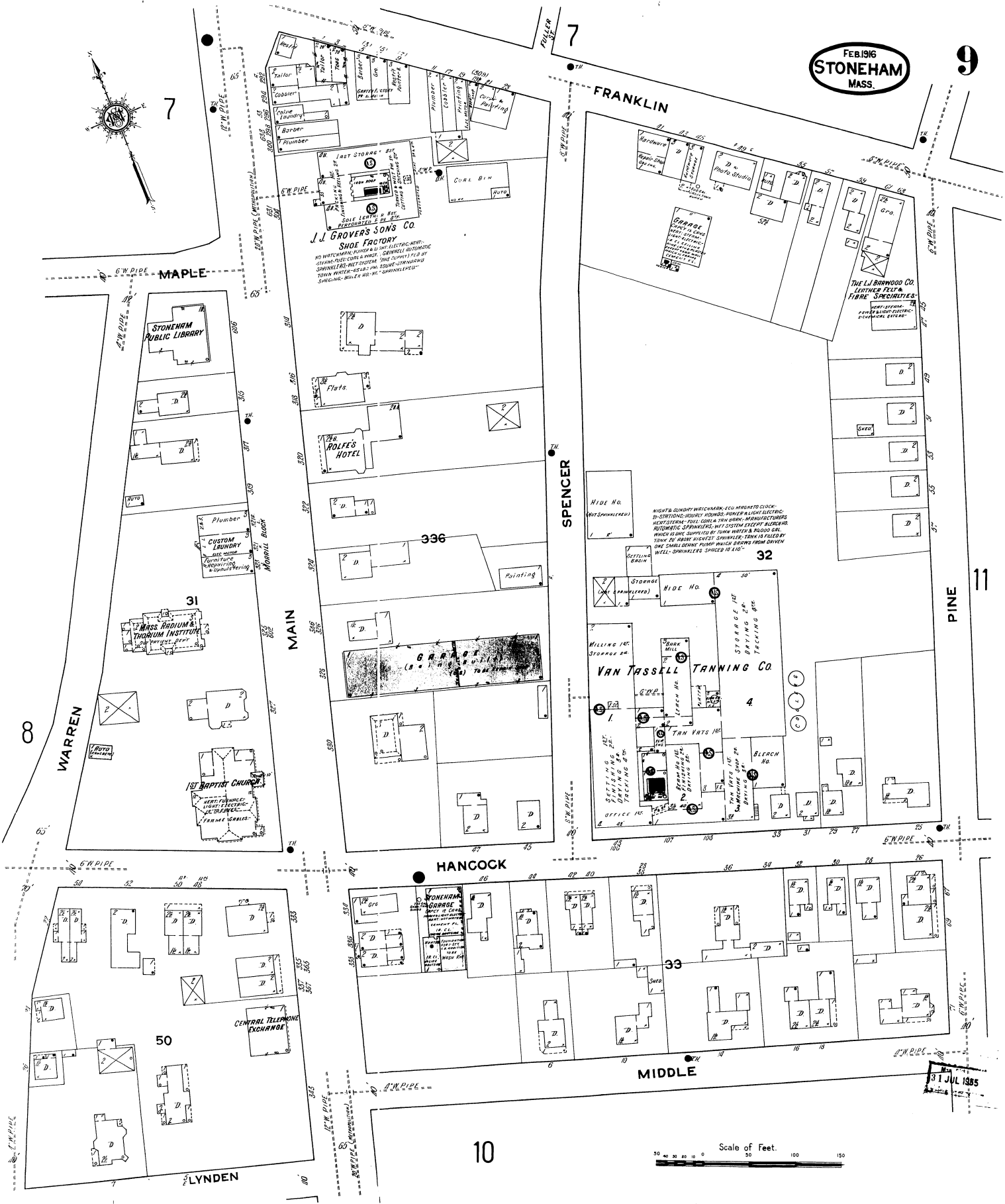
PINE

11

HANCOCK

MIDDLE

LYNDEN



J.J. GROVERS SONS CO.
SHOE FACTORY
NO. 100 FRANKLIN ST. STONEHAM, MASS.
MANUFACTURERS OF ALL KINDS OF SHOE LATHS & MACHINERY
SOLE LEATH & RAY
PERFORATED LEATH

STONEHAM PUBLIC LIBRARY

ROLFE'S HOTEL

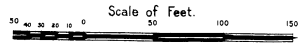
VAN TASSELL TANNING CO.
4
TAN VATS 1ST
BLEACHING 2ND
DRYING 3RD
TRUCKING 4TH
STORAGE 5TH

MASS. ACADEMY OF MUSIC

1ST BAPTIST CHURCH

YONAH'S GARAGE

CENTRAL TELEPHONE EXCHANGE



31 JUL 1955