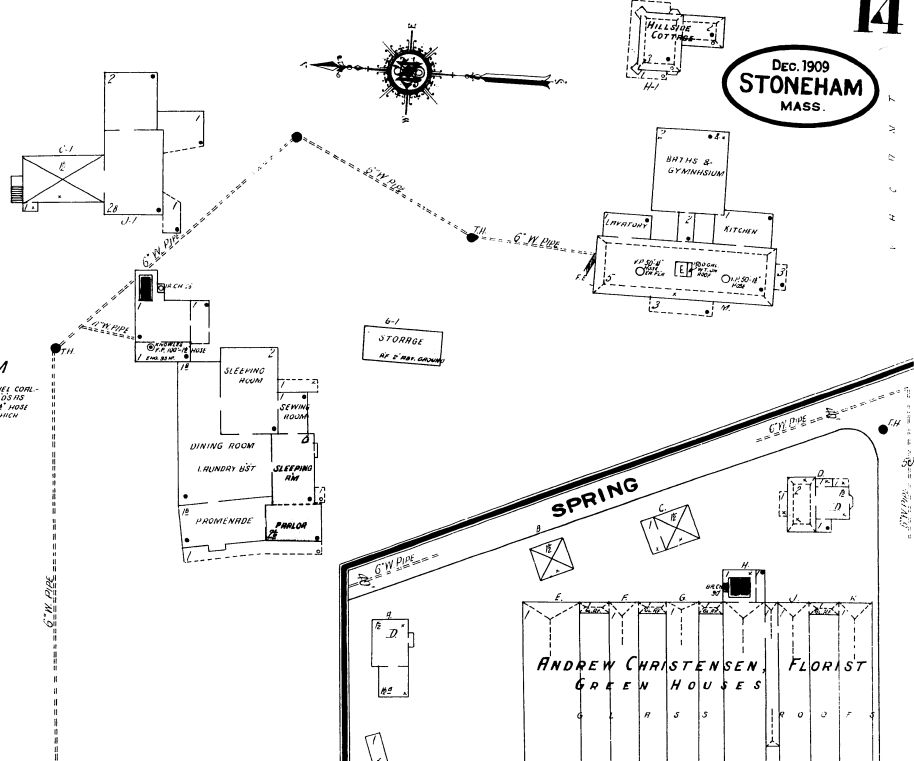


Dec. 1909  
**STONEHAM**  
MASS.

### NEW ENGLAND SANITARIUM

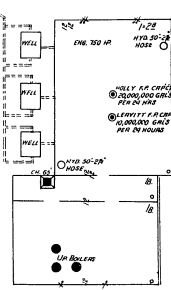
NIGHT WATCHMAN, NEWMARKET, 11 STATIONS HOURLY ROUNDS - HEAT BY POWER & STEAM - FUEL COAL - LIGHTS ELECTRIC (UNDER FLOOR) - 11 P.M. HYDROGEN OIL LAMP USED AFTER 8:30 P.M. - 11:15 P.M. SHOWS SUPPLIED BY TOWN WATER, 30 LBS. PRESSURE - 500' IN HOSE ON DEFL. - 1/2 IN. 1/4 IN. 50' IN HOSE HO SHOWS SUPPLIED BY TOWN WATER & TOWN ON HOSE - 1/2 IN. 1/4 IN. 50' IN HOSE WHICH PUMPS TO TRUCK - 21 PRYAL CHAIN EXTENS.

At Spot Pond  
Located 2 Miles S.W. of Central Sq.  
(NO EXPOSURE ANY SIDE)

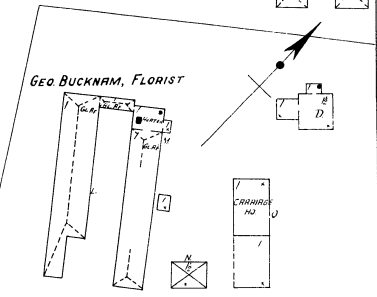
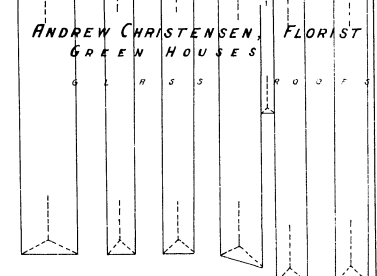


### METROPOLITAN WATER WORKS PUMPING STATION

NIGHT WATCHMAN, NO LOCK - HEAT BY STEAM - FUEL COAL - LIGHTS ELECTRIC (UNDER FLOOR) - HYDROGEN OIL LAMP USED AFTER 8:30 P.M. - 11:15 P.M. SHOWS SUPPLIED BY TOWN WATER, 30 LBS. PRESSURE - 500' IN HOSE ON DEFL. - 1/2 IN. 1/4 IN. 50' IN HOSE HO SHOWS SUPPLIED BY TOWN WATER & TOWN ON HOSE - 1/2 IN. 1/4 IN. 50' IN HOSE WHICH PUMPS TO TRUCK - 21 PRYAL CHAIN EXTENS.



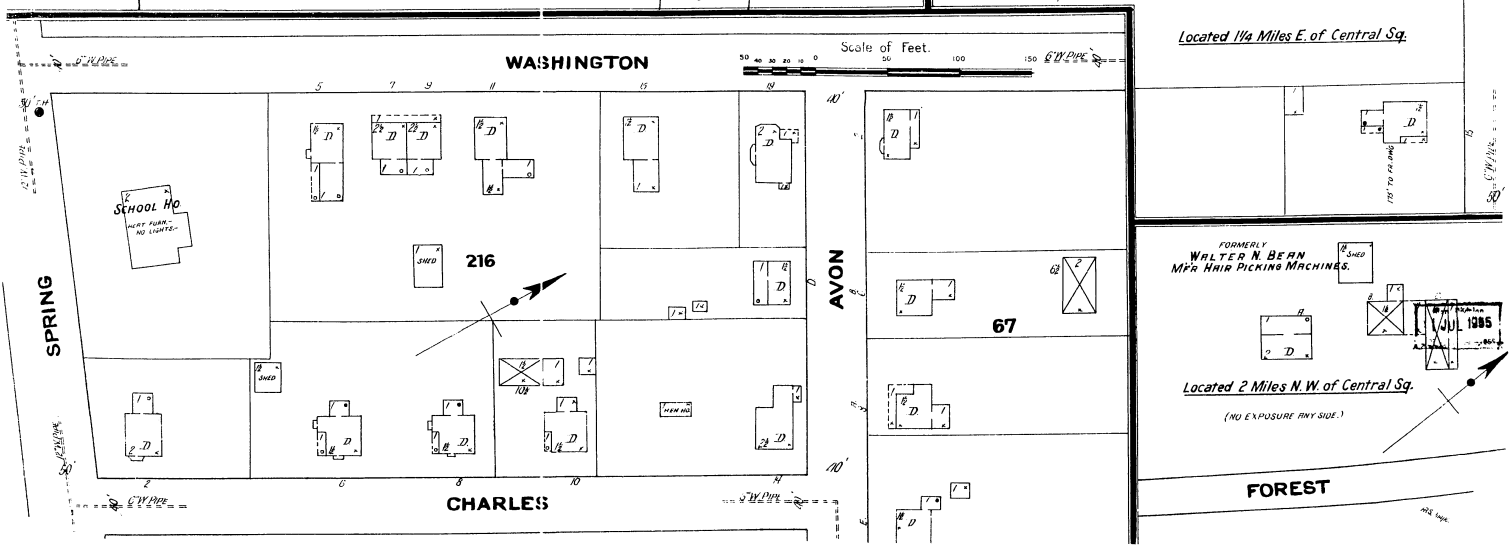
At Spot Pond  
Located 1 3/4 Miles S.W. of Central Sq.  
(NO EXPOSURE ANY SIDE)



Located 1 1/4 Miles E. of Central Sq.

### WASHINGTON

Scale of Feet. 0 50 100 150



FORMERLY  
WALTER W. BEAN  
MFR. RING PICKING MACHINES.

Located 2 Miles N.W. of Central Sq.  
(NO EXPOSURE ANY SIDE.)

### FOREST