

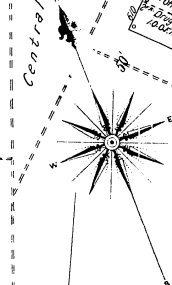
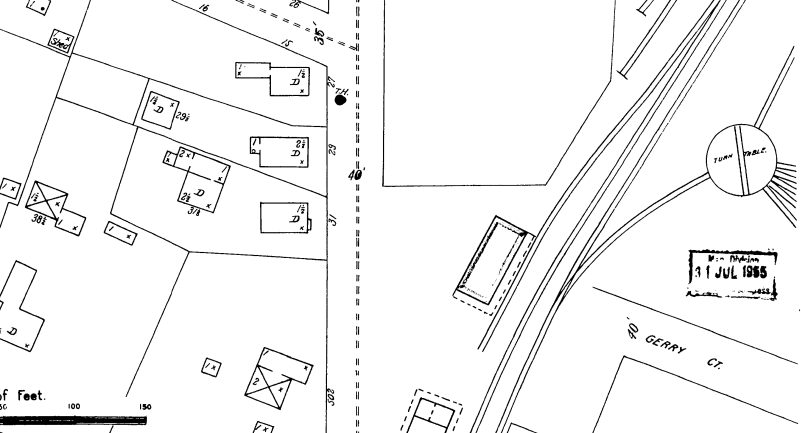
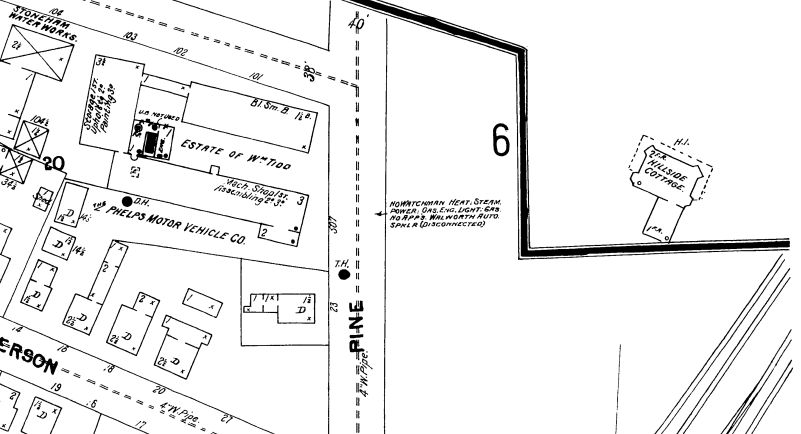
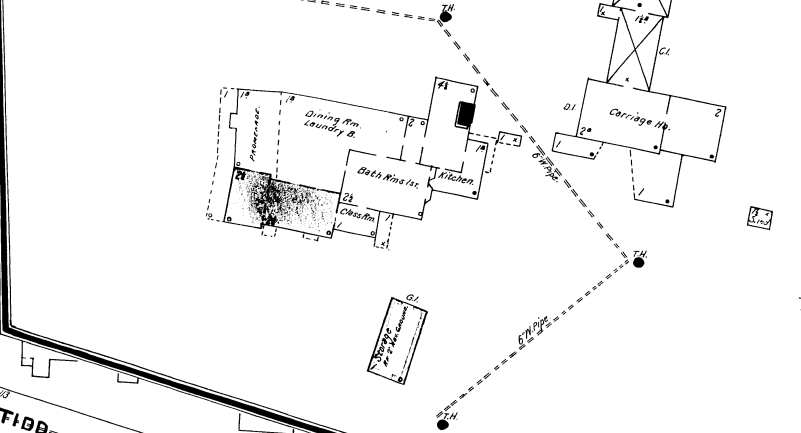
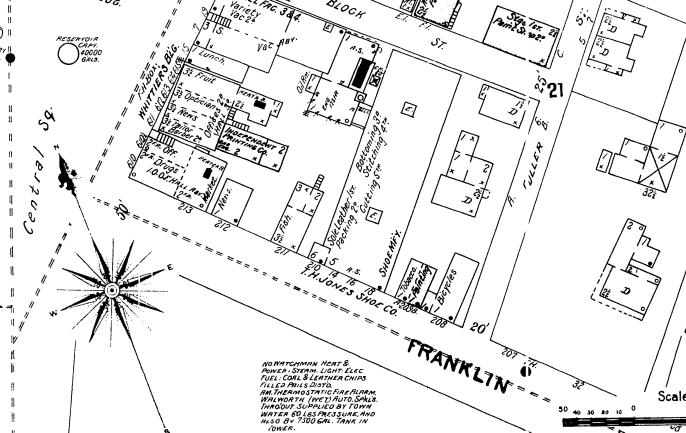
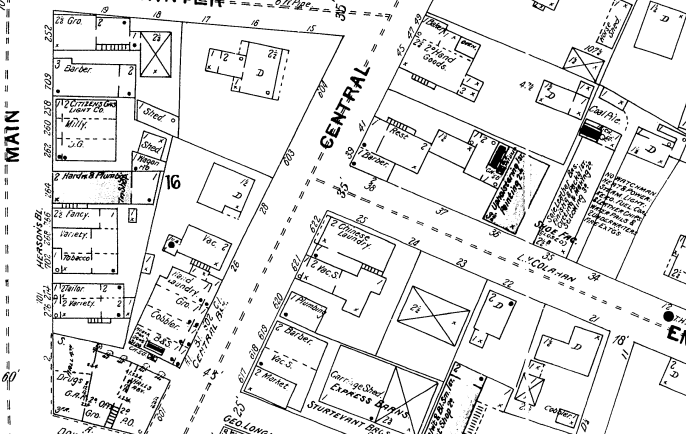
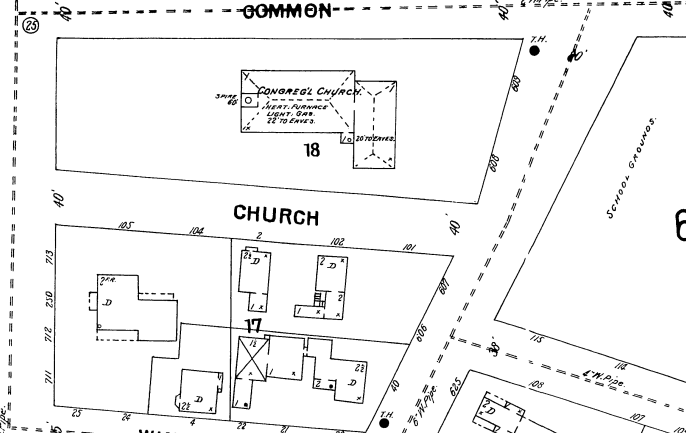
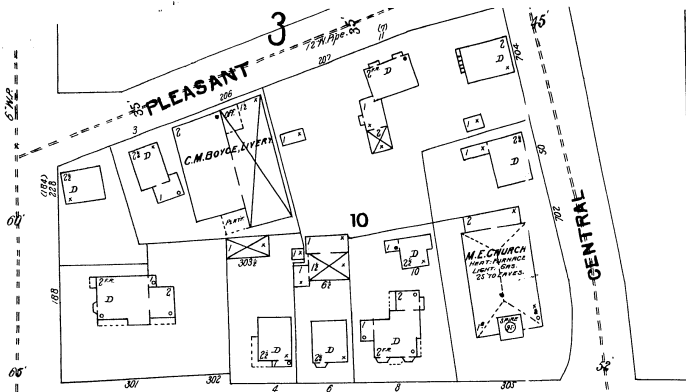
MAY 1903
STONEHAM
MASS.

5

At Spot Pond 2 Miles
S.W. of Central Sq.

NEW ENGLAND SANITARIUM

(LANGWOOD HOTEL)
NIGHT WATCHMAN, 10 O'CLOCK.
NEAR STATION, 1000 FEET.
HOTEL, 40 ROOMS, 500 SEAT ROSE.
WATER, FROM WELLS.
FIRE ALARM BOX 300 N. OF BLDG.
NO EXPOSURE ANY SIDE.



Scale of Feet.

8

1 JUL 1905

NO WATCHMAN HEAT SYSTEM
POWER, SEWAGE, LIGHT, WATER
FULLY COAL & LEATHER OILS
FUEL CO. PILES OUTSIDE
FOR THERMOSTATIC REGULATION
WATER HEATERS, ELECTRIC, GAS,
TURBOID SUPPLIED BY TOWN
WATER & GAS PRESSURE, 100
PSI. & 7500 GAL. TANK IN
TOWER.